



XPUMP features a patented digital signal processing algorithm called XROUND™, which identifies and analyzes an audio source in real-time, then reconstructs the sound field to add detail and aural space, to give the user the most immersive listening experience.



XPUMP SPECIFICATION

Inputs 3.5mm AUX analog audio

Output 3.5mm AUX analog audio

Processor Dual core audio processors with clock speed of 55.3MHz

Sample Rates & Bit Depths 48KHz / 16bit

Frequency Response 20Hz-20KHz, +/-0.1dB

Maximum Output power 25mW into 32 - Ω load

THD < 0.01%, 20Hz - 20KHz, at max output

S/N > 85dB, unweighted

Crosstalk - 80dB, 20 - 20kHz

Power Supply Rechargeable battery
(400mah Lithium-ion battery with UL1642 compliance)

Size 9.2 x 2.7 x 1.55 mm

Weight 35g

Accessories Gold plated AUX audio jack (100cm)
USB charging cable (100cm)
XROUND sleeve bag

M.S.R.P. \$119 USD



service@embracelab.com



www.xroundaudio.com

MANUFACTURER : EMBRACE AUDIO LAB INC.
USA : 9824 IMPERIA CT, ELKGROVE, CA 95757
TAIWAN : 10F-4, NO 738, ZHONGZHENG RD, ZHONGHE DIST, NEW TAIPEI CITY 235

Designed by Embrace Audio Lab in Taipei Assembled in Taiwan

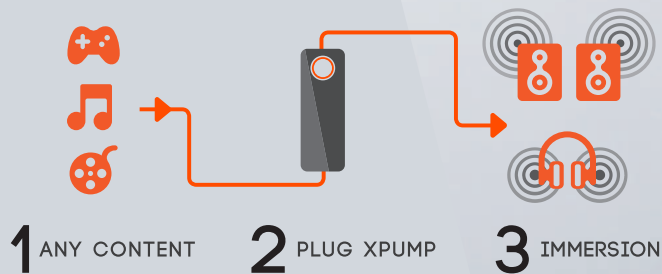


XPUMP
REDEFINE
SOUND
EXPERIENCE

CROWDFUNDING STATUS

Reached **KICKSTARTER** funding goal in **8** hours

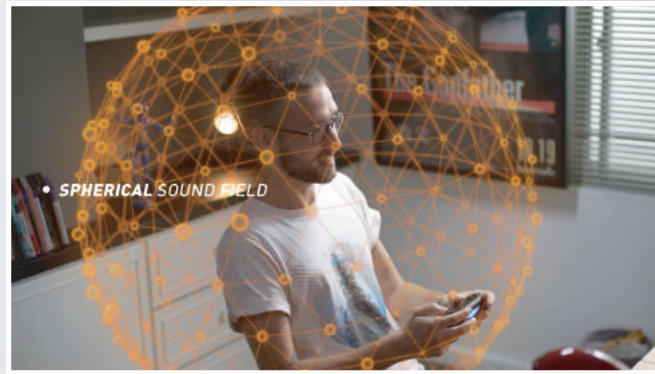
XPUMP was **910%** funded in **45** days



XPUMP FEATURES

■ Spherical Sound Field Expansion Technology

that expands a stereo sound field by 200 percent while enhancing signal depth, width, and detail.



■ Soundstage Elevation

that unlocks the richness of an audio track, giving listeners the ability to discern different instruments, voices, and sound effects.

■ Real-Time Boosting

XPUMP processes the audio signal every microsecond.



■ Psychoacoustic Bass Enhancement

increases the perception of bass frequencies.

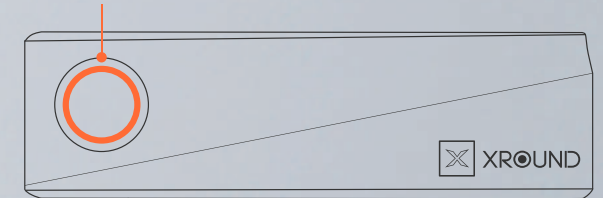
USER MANUAL

XROUND™ effect switch

Users are free to select from level 1 & 2 to fit their own preference

Level 1 with a white light-- detail booster and good for all types of music

Level 2 with an orange light-- full-scale enhancement designed for movies, games, and music

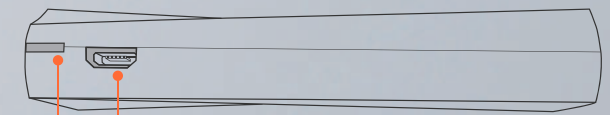


Volume + (up) and - (down)

Power OFF

Speaker mode to pair with 2.0 or more speakers, soundbars and amplifiers/ audio systems

Headphone mode to pair with headphones



Micro-USB charging port

LED notification light

White light : power-on

Red light : battery recharging; light off when fully charged

Red flashing light : low battery indicator



INPUT

Connect the 3.5mm audio cable into any sound source and play the music, movies, games that you intend to enjoy



OUTPUT

3.5mm audio output to link with 2.0 or more speakers, soundbars, headphones, amplifiers, or audio systems